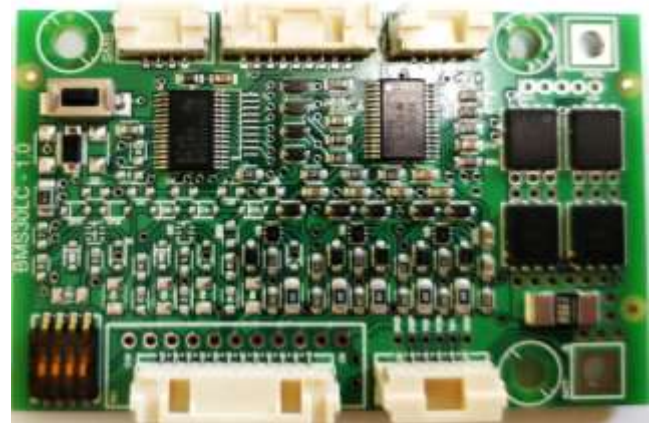


Features

- ◆ Ultra-lightweight : 10 gr
- ◆ Manages from 3 to 10 battery lithium cells
- ◆ Cell voltage up to 5V
- ◆ Supports multiple battery chemistries
- ◆ Redundant analog and digital protections
- ◆ Below 70µA in sleep mode
- ◆ Embedded smart power supply
- ◆ State of Charge (SOC)
- ◆ Embedded passive cell balancing
- ◆ Maximum output current fully configurable
- ◆ High EMI immunity
- ◆ Made in France



Applications

- ◆ Portable products
- ◆ E Bike and LEV vehicles
- ◆ Drones, robots
- ◆ Backup battery systems

- ◆ **Lightweight: 10 gr**
- ◆ **Very compact : 61 x 38 x 8 mm**



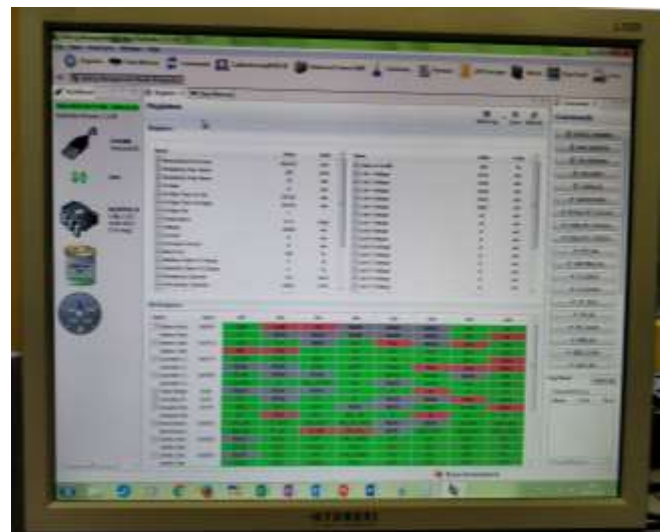
Basic protection description

- ◆ Over Voltage
- ◆ Under Voltage
- ◆ Under Temperature
- ◆ Over Temperature
- ◆ Over Current
- ◆ Short Circuit



Advanced functions

- ◆ Fuel gauge for SOC (state of charge) with impedance tracking
- ◆ Cell Balancing
- ◆ On board and external temperature sensors
- ◆ Protections level setting with software tool
- ◆ SMBus communication Bus
- ◆ Datalogging memory with battery Lifetime and main events
- ◆ 5 x leds display output connector
- ◆ On/Off button
- ◆ 2 x Interlock input for battery detection
- ◆ 1 x storage smart switch



Overview

General Specifications

| ITEM | DETAILS |
|------------------------|---|
| Board Battery Voltage | 6 to 50 VDC |
| Cells per Board | 3-5 cells (TYVA BMS-LC30-5S-A) 6-10 cells (TYVA BMS-LC30-10S-A) |
| Maximum output current | 25 A continuous, 40 A (20 s), 100 A (1s) |
| Balancing current | 50 mA |
| Temperature sensors | 1 on the board + 1 to 2 external T°C sensors |
| Control IO's | 1 On/Off Switch, 2 x Interlock, 1 prog port, 1 display 5 leds output, GPIO output |
| Communication | SMBUS |
| Temperature range | -40°C to 85°C |
| Dimensions | 61 x 38 x 8 mm |
| Weight | 10 gr |

